



BC-3600 ^{NEW}

Auto Hematology Analyzer

Pleasant Experience in Hematology Testing

mindray
healthcare within reach

BC-3600

Auto Hematology Analyzer

Labs today are facing a multitude of challenges including limited laboratory budgets, increasing requirements for high quality as well as reliable products, a shortage of experienced clinicians and so on. We understand the specific needs of end users, and use them as the foundation for our new solution BC-3600. Complete with an intuitive operation system, convenient data communication interface, excellent performance, BC-3600 is a system solution for satellite labs and clinics.

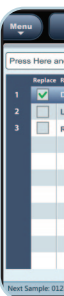
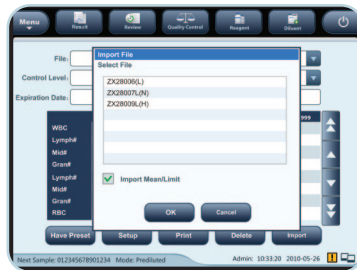
- CBC+3-DIFF, 21 parameters+3 histograms
- Throughput: 60 samples per hour
- Intuitive operation system with TFT touch screen
- Enhanced performance by proven technologies
- Open vial or closed sampling optional
- 40,000 results storage with histograms
- Original QC, calibrators and reagents



User-friendly User

Intuitive and Powerful Software

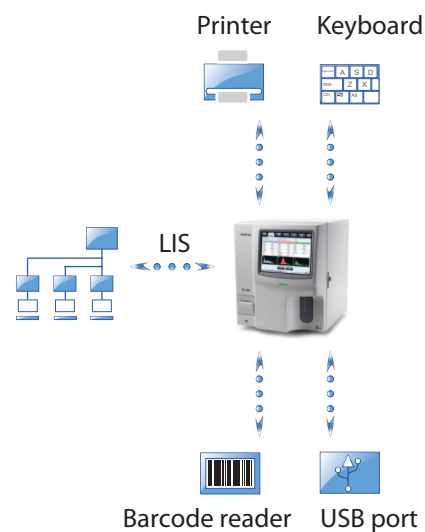
The well organized software interface eases your operation and gives you easy control of sample results, patient records, and report customizations. Shortcut menu simplifies your work process and improves your efficiency. Distinguishable areas display WBC, RBC and PLT results clearly. Automatic maintenance programs can be executed by double-clicking while operational errors can be removed by single clicks.



ndly -friendly

Complete Data Communication

Integrated HL7 communication protocol makes your LIS connection easier. A wide selection of interface options are available including RS232 for external printer connection, USB for QC assay values upload, barcode scanner, and key board connection.

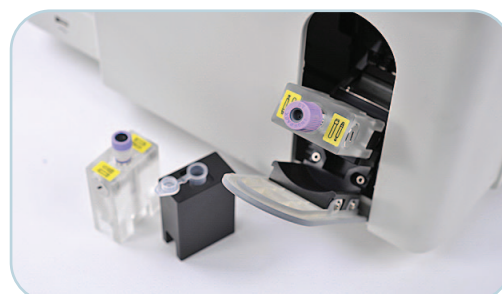


Intelligence and Efficiency

Efficient ZAP and flush method removes clog completely. For closed sampling model, 3 types of tube adaptors are provided to satisfy individual laboratory needs. With the on-line reminder function, users can conveniently monitor the reagent residual volumes through the software.

Reagent Name	Lot	Validity	Expiry	Days	EST Date	Remainder
Reagent	20091224	2019/12/23	2019/10/21	60	2019/12/19	100%
yes	20091224	2019/12/23	2019/10/21	60	2019/12/19	100%
time	20091224	2019/12/23	2019/10/21	60	2019/12/19	100%

34557891234 Mode: Prediluted Admin: 10:33:20 2010-05-26



Surpassing Performance

Surpassing Performance

Expanded Linearity and Enhanced Performance

Advanced counting technology and dynamic tracking technology expands the linearity and enhances accuracy significantly. Robust signal frequency analysis method minimizes interruption and delivers accurate PLT counting.

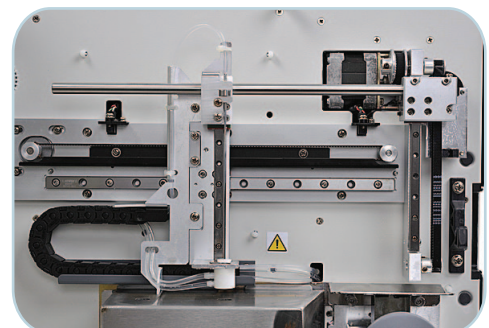
Superior Reagents, Quality Controls and Calibrators

High quality original reagents, calibrators and controls offer a complete system for our users. Cyanide free reagents allow laboratories to meet necessary environmental regulations. Complete traceability system ensures closest consistency with standard methods.



High Quality Design

New internal structural design separates electronic components from the fluidic system, decreasing interference while at the same time allowing for easier maintenance.



BC-3600

Auto Hematology Analyzer

Technical Specifications

Parameters

WBC, Lymph#, Mid#, Gran#, Lymph%, Mid%, Gran%, RBC, HGB, HCT, MCV, MCH, MCHC, RDW-CV, RDW-SD, PLT, MPV, PDW, PCT, P-LCR, P-LCC and histogram for WBC, RBC, PLT

Principles

Electrical resistance for counting WBC, RBC and PLT and cyanide free method for hemoglobin

Performance

Parameter	Linearity Range	Precision (CV%)
WBC ($10^9/L$)	0-300	2.5(7.0-15.0)
RBC ($10^{12}/L$)	0-8.00	2(3.50-6.5)
HGB (g/L)	0-280	1.5(100-180)
MCV (fL)		0.5(80.0-110.0)
PLT ($10^9/L$)	0-3000	4(150-500)

Sample Volume

Prediluted	20 μ L
Whole Blood	17 μ L

Throughput

60 samples per hour

Display

Large color touch screen
Resolution: 800 \times 600

Carryover

WBC, RBC, HGB < 0.5%, PLT < 1.0%

Connectivity

4 USB port (for external printer, software upgrade, barcode reader, keyboard and mouse), LAN port (1), RS232 (1)

Printout

Thermal recorder, 50mm width paper, various printout formats, external printer optional

Operating Environment

Temperature: 15 $^{\circ}$ C~30 $^{\circ}$ C
Humidity: 30%~85%

Power requirement

AC 100-240V, 50/60 \pm 1Hz

Dimension

395mm (H) \times 450mm (W) \times 445mm (D)

Configuration

Open vial or closed sampling optional

Weight

28kg

DISTRIBUTOR:



MINDRAY is a trademark of Shenzhen Mindray Bio-Medical Electronics Co., Ltd. Specifications subject to changes without prior notice.
© 2010 Shenzhen Mindray Bio-Medical Electronics Co., Ltd. All rights reserved.
P/N: ENG-BC3600-21285x6-20101014

mindray

Mindray is listed on the NYSE under the symbol "MR"
Mindray Building, Keji 12th Road South, High-tech Industrial Park,
Nanshan, Shenzhen 518057, P.R. China
Tel: +86 755 26582888 Fax: +86 755 26582680
E-mail: intl-market@mindray.com Website: www.mindray.com